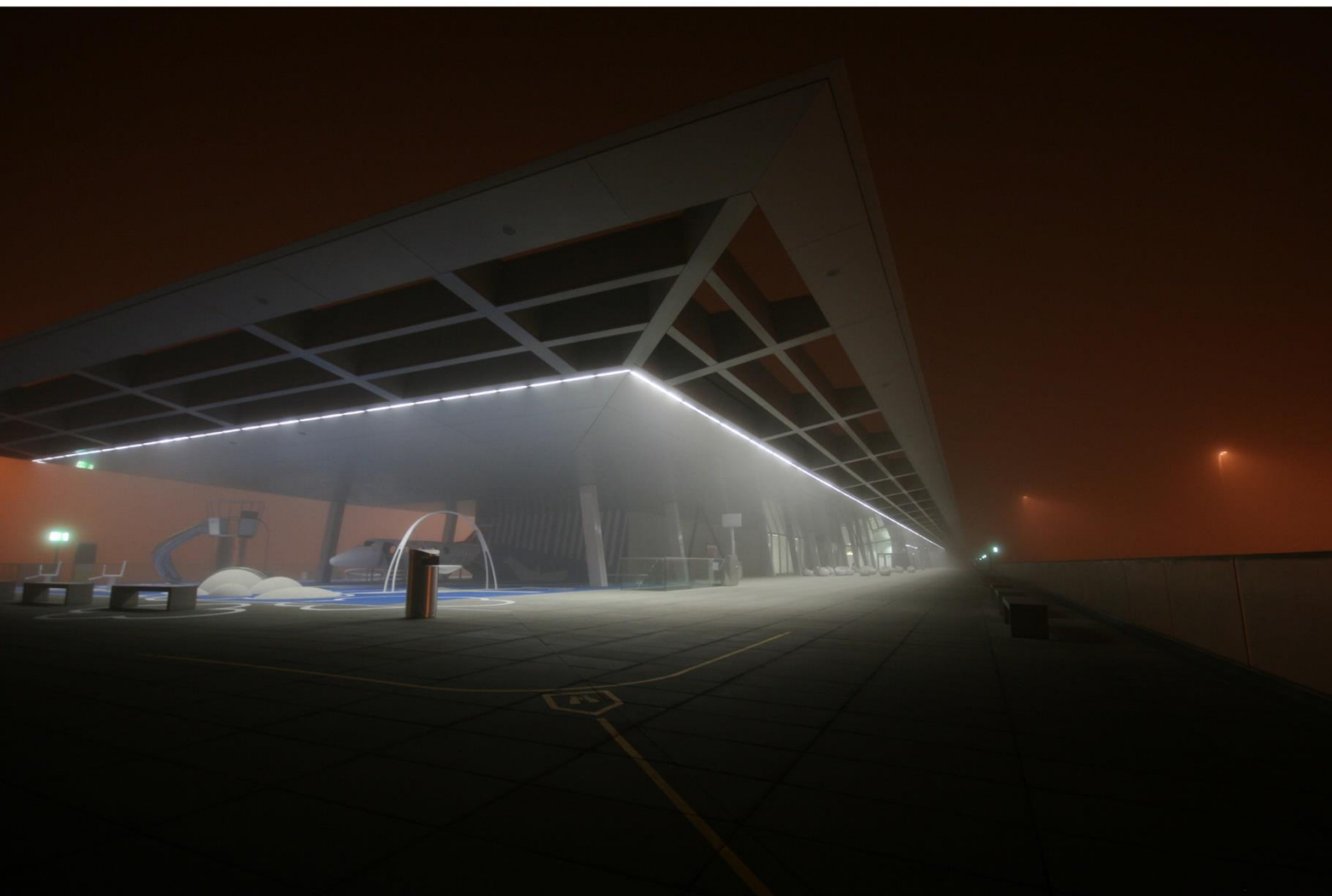


Lighting Design Austria

Zurich Airport - Dock B / Switzerland

Lighting design for all interior and exterior areas



Overview

1. Situation

The existing building was completely gutted. Based on the existing supporting structure the Dock was totally redesigned and reconstructed.

LDA was in charge of the design of the complete interior, emergency, security and outdoor lighting systems.

2. Solution

A clearly zoned lighting concept was implemented, dividing the space into motion and rest areas. An easy and fast orientation as well as a stress-free stay in compliance with applicable laws and standards is ensured.

3. Special features

- ✓ Façade integrated outdoor lighting
- ✓ Overall lighting system running with minimal glare
- ✓ Development of special solutions for specific areas
- ✓ Implementation in a very short construction period and in compliance with very tight budget conditions.

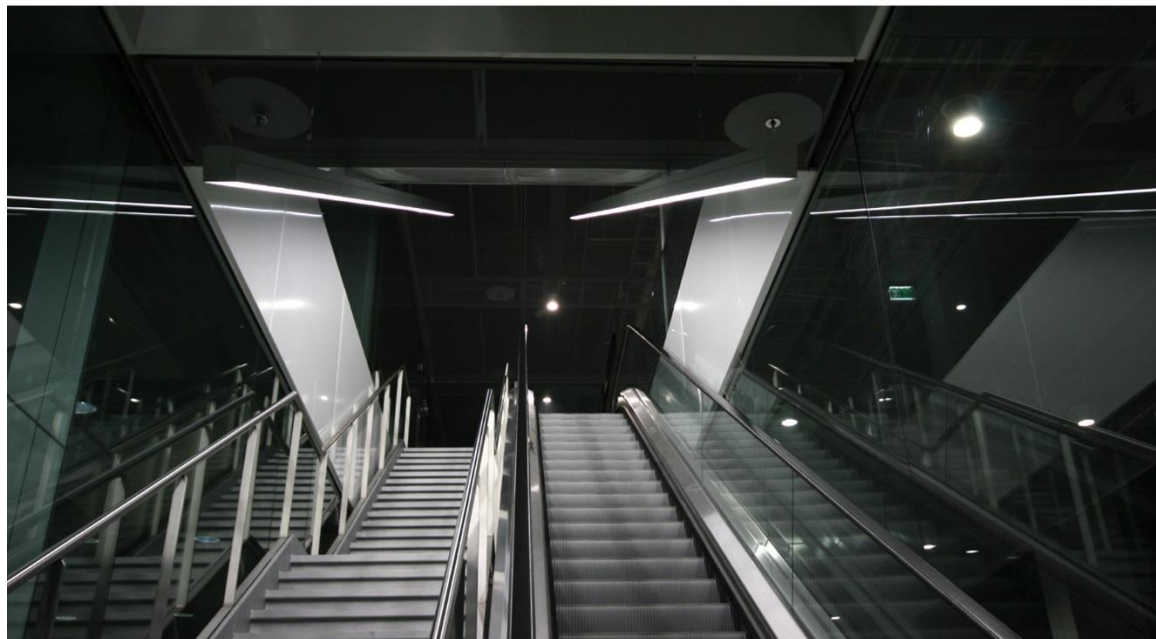
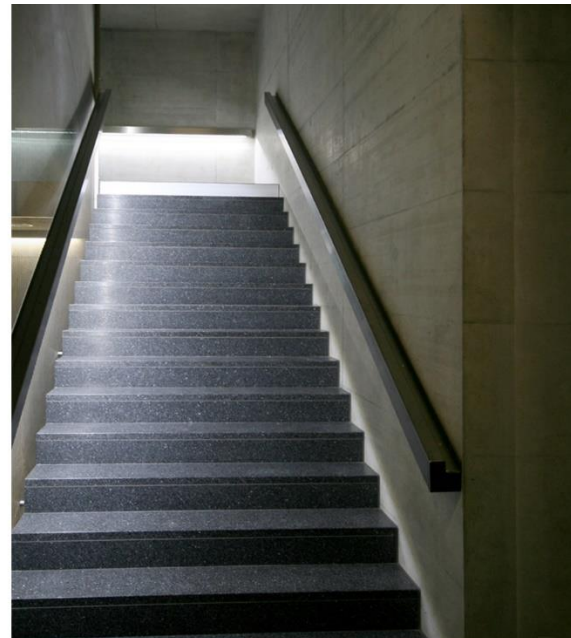
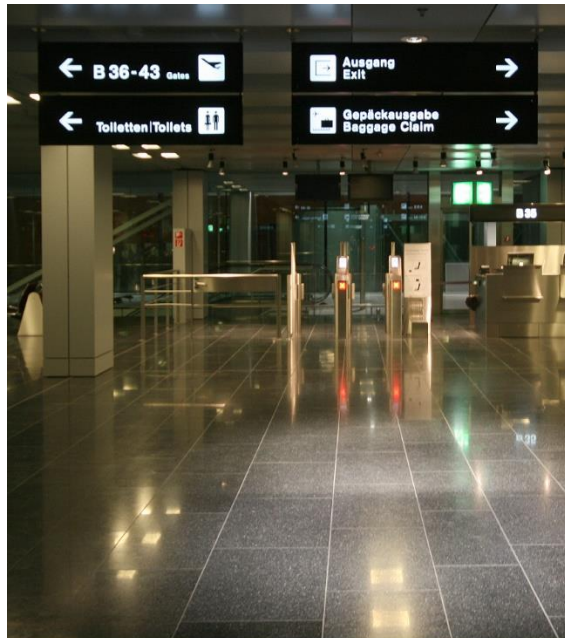
1 | Interior lighting – motion areas

Above Left:
Gate access

Above Right:
Staircase lighting

Below:
Escalators lighting

Client: *Burckhardt & Partner AG*
Zurich
Arrival & Departure Hall
Artificial & Outdoor
Lighting Design
Location: *Zurich / Switzerland*
Year: *2008 - 2011*



2 | Interior lighting – motion areas

Transit hall

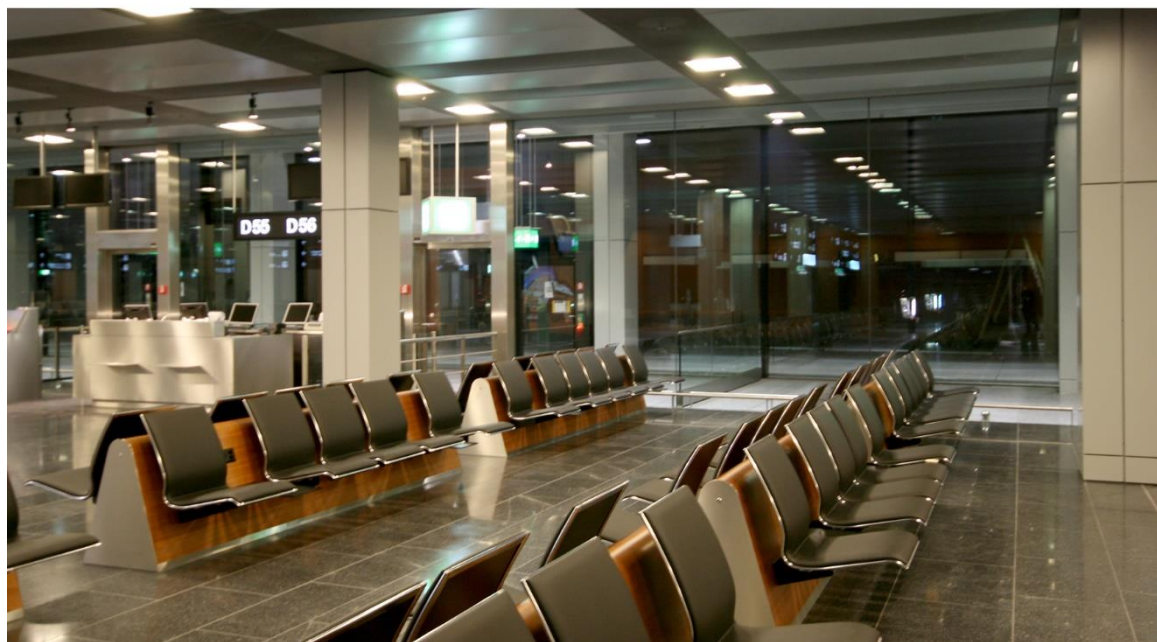
Client: *Burckhardt & Partner AG*
Zurich
Arrival & Departure Hall
Artificial & Outdoor
Lighting Design
Location: *Zurich / Switzerland*
Year: *2008 - 2011*



3 | Interior lighting – rest areas

Above and below:
Waiting areas

Client: *Burckhardt & Partner AG*
Zurich
Arrival & Departure Hall
Artificial & Outdoor
Lighting Design
Location: *Zurich / Switzerland*
Year: *2008 - 2011*



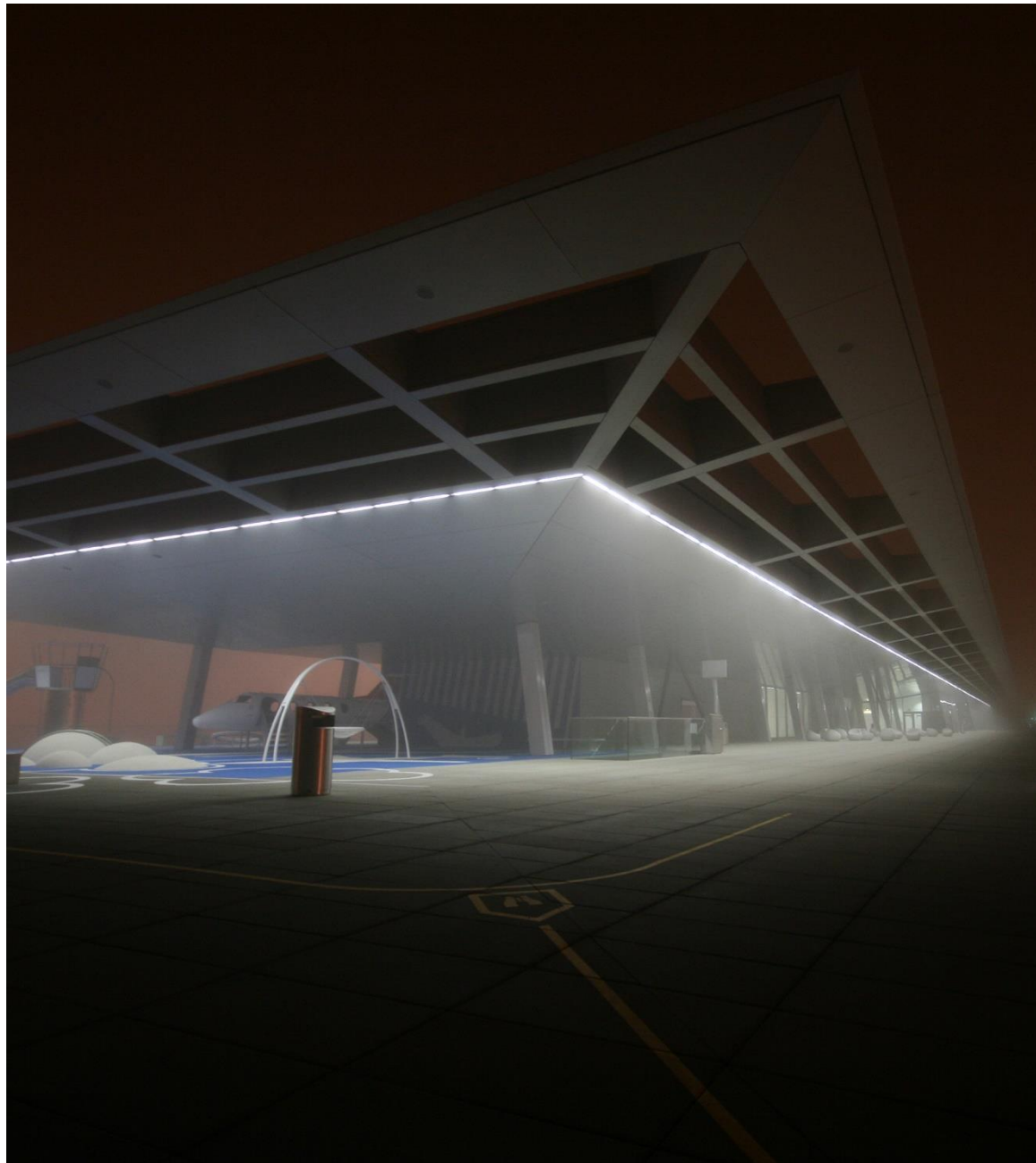
4 | Exterior lighting

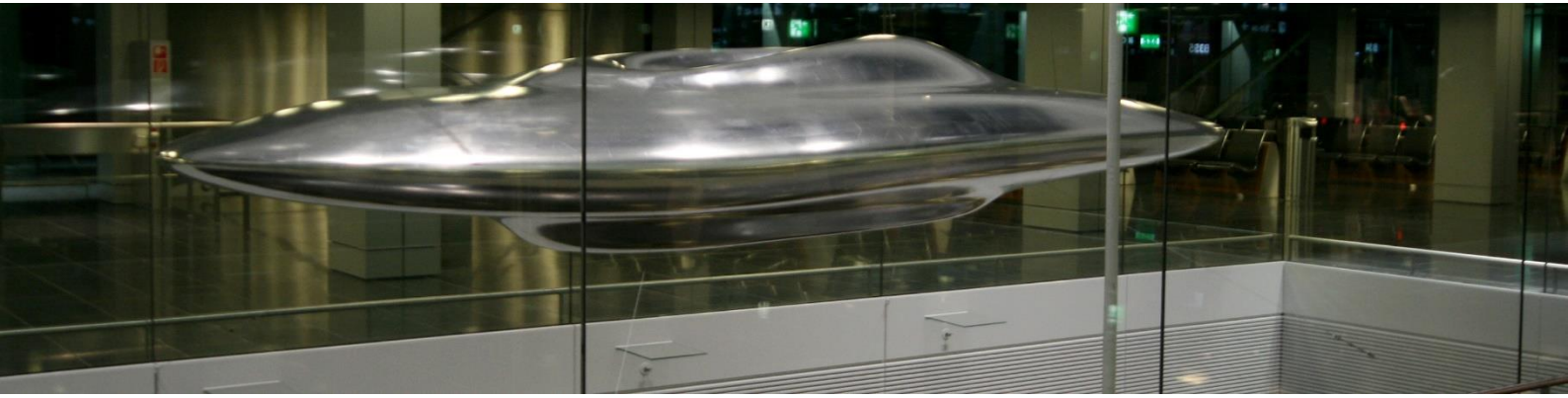
Visitor terrace / Roof

Client: *Burckhardt & Partner AG*
Zurich

Arrival & Departure Hall
Artificial & Outdoor
Lighting Design

Location: *Zurich / Switzerland*
Year: *2008 - 2011*





Contact

Headquarter Austria:

Lighting Design Austria e.U.
Marienstrasse 23
3032 Eichgraben
Austria



Tel / Fax: +43 2773 435 34
Mobile: +43 664 16 00 140
E-mail: office@LDA.at
Web: www.LDA.at

Lighting Design Austria on Youtube:
<http://www.youtube.com/watch?v=MEsv73-gV1k>

Directions

Our office in Eichgraben will welcome you based on pre-agreed schedules for meetings:

A) from Vienna on the A1 motorway exit Pressbaum and the federal highway 44 to Eichgraben (distance 25 km).

B) from Linz / Salzburg on the A1 motorway exit St. Christophen, then on the federal highway 19 to Neulengbach and the federal highway 44 to Eichgraben.

© 2013, all rights reserved. Reproduction in whole or in part is prohibited without exception.